

Call: +44 (0)1252 361550



## Brackendale Road, Camberley, Surrey, GU15 2JY

A five bedroom detached house presented in excellent condition and situated in one of Camberley's most sought after locations on a plot of approx 0.4 acre. This spacious house is a must see - offering extensive and flexible accommodation that would suit most families. A particular feature to note are the large reception rooms opening onto the secluded rear garden via bi-folding doors. Further accommodation comprises kitchen/dining room, utility room, home office, two cloakrooms plus larder store cupboard. On the first floor there is a master bedroom measuring 23ft by 14ft with large en suite bathroom, a further four large bedrooms (two with en suites) plus a large galleried landing.

**Price: £1,275,000**

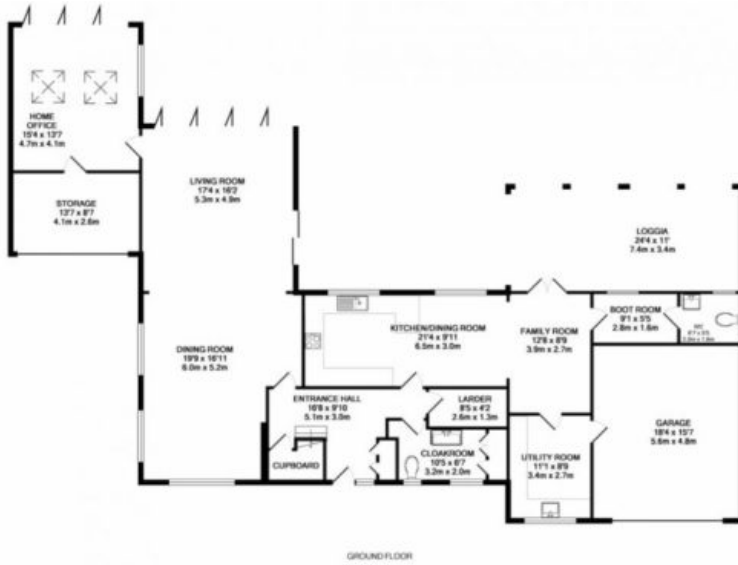
### Overview

- Five Bedrooms
- Approx. 0.4 of an Acre Plot
- Approx. 3380 sqft of accommodation
- Twin Gated Driveways
- Garden Loggia
- Premier Location
- Double Garage
- EPC Rating : C (69)
- Freehold

Call: +44 (0)1252 361550



Call: +44 (0)1252 361550



While every attempt has been made to ensure the accuracy of the floor plan contained here, representations of plans, drawings, reports and any other work are prepared and the responsibility is taken for any error, omission, or misstatement. This plan is for illustrative purposes only and should be used as such by any prospective purchaser. The services, materials and equipment shown here are not intended to be guaranteed. See to the full particulars of the plan on the ground. Made with AutoCAD 2017.