

Call: +44 (0)1252 361550



Moorlands Place, Camberley, Surrey, GU15 3EE

Positioned within walking distance of Camberley town centre, this beautifully presented character property has been extensively refurbished and is offered with no onward chain complications. Retaining features including high ceilings, fireplaces and wood flooring, the accommodation comprises of a dual aspect living room, kitchen/breakfast room opening onto a further dining room and cloakroom. To the first floor there are three bedrooms, with an en-suite to the master and a further bathroom servicing bedrooms two and three.

Price: £400,000

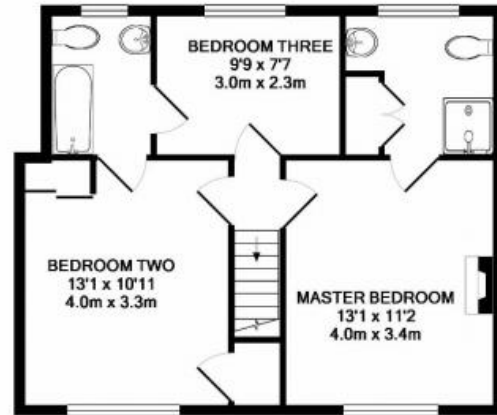
Overview

- Three Bedrooms
- Character Property
- Beautifully Presented Throughout
- Two Reception Rooms
- Refitted Kitchen/Breakfast Room
- Two Bath/Shower Rooms
- Driveway Parking
- No Onward Chain
- Freehold

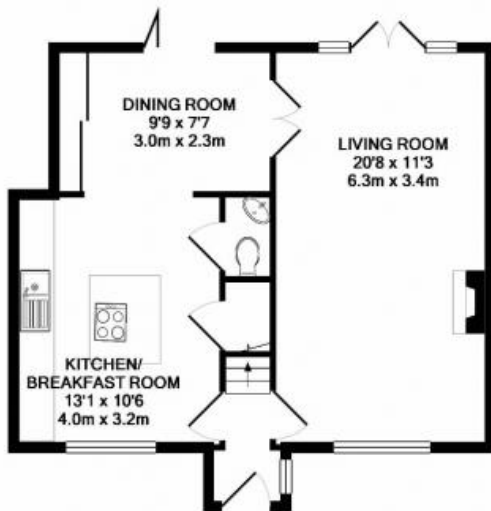
Call: +44 (0)1252 361550



Call: +44 (0)1252 361550



1ST FLOOR



GROUND FLOOR

Whilst every attempt has been made to ensure the accuracy of the floor plan contained here, measurements of doors, windows, rooms and any other items are approximate and no responsibility is taken for any error, omission, or mis-statement. This plan is for illustrative purposes only and should be used as such by any prospective purchaser. The services, systems and appliances shown have not been tested and no guarantee as to their operability or efficiency can be given.
Made with Mettpro ©2019