



Two Bedroom Ground Floor Maisonette Woodlands Road, Camberley, Surrey, GU15 3LZ

Guide Price: £330,000

- Two Double Bedrooms
- Garden Apartment
- Ground Floor
- En Suite Shower Room and Bathroom
- Private Garden Space
- Two Allocated Parking Spaces
- No Onward Chain
- EPC: D (63)



Description

A spacious and well presented two double bedroom ground floor garden apartment, located in Camberley town centre and offered with no onward chain.

The accommodation comprises of a living room with patio doors out on to the garden space, a separate spacious kitchen, principal bedroom with walk-in wardrobe and refitted en suite shower room. There is a further double bedroom with storage, all over one floor.

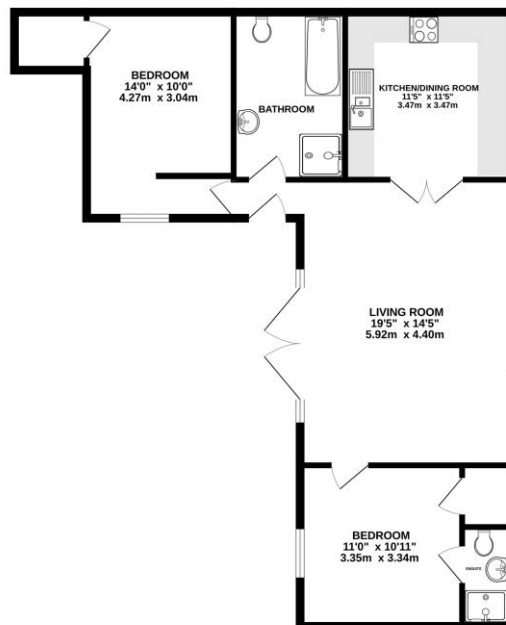
An internal inspection is highly recommended to truly appreciate all that this property has to offer.

Outside

Externally, the property benefits from an enclosed garden to the front of the property. It is mainly laid to lawn, with a spacious patio area, and gated access to your two allocated parking spaces.

Floorplan

GROUND FLOOR



Whilst every attempt has been made to ensure the accuracy of the floorplan contained here, measurements of doors, windows, stairs and any other items are approximate and no responsibility is taken for any omission or mis-statement. This plan is for illustrative purposes only and should be used as such by any prospective purchaser. The structure, systems and appliances shown have not been tested and no guarantee as to their operability or efficiency can be given.
Made with MyHomeplan ©2014



TO ARRANGE A VIEWING PLEASE CONTACT:
Tel: **01252 361550** or Email: **info@bridges.co.uk**



Important Notice - These particulars are set out as a general outline only for the guidance of intended purchasers/tenants and do not form part of any offer or contract and must not be relied upon as statements or representations of fact. Purchasers/Tenants must satisfy themselves by inspection or otherwise as to their correctness.