



Two Bedroom Detached Mobile Home

Middleview Drive, Surrey Hills Park, Normandy, Surrey, GU3 2AZ

Offers in excess of: £150,000

- Two Double Bedrooms
- Popular Park Location
- Large Kitchen
- Well Presented Throughout
- Close to Guildford
- Parking Space
- Well Maintained South Facing Garden
- EPC: TBC



Description

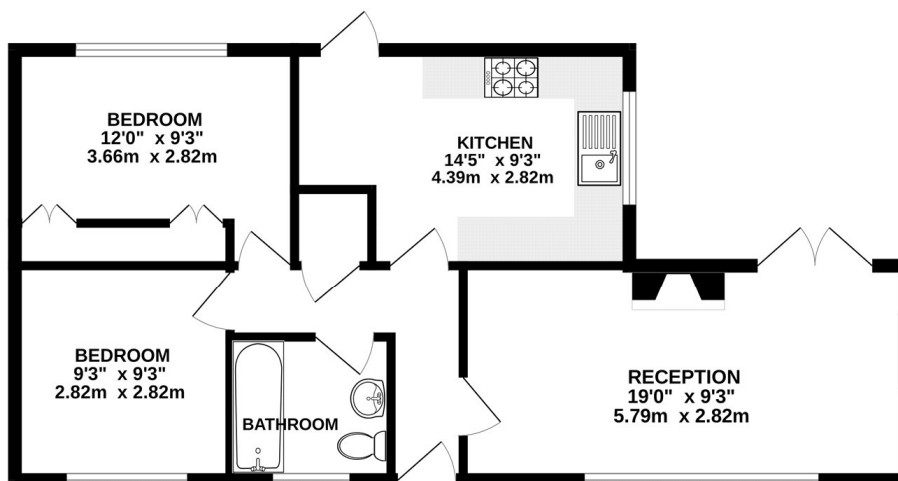
A superb two double bedroom park home, which is located in a tucked away position on the extremely popular Surrey Hills park development in Normandy. This home has been very well looked after by the current owners and boasts a smart refitted kitchen. There is a generous living/dining room and a modern bathroom. The park itself is extremely smart and well-maintained - and is conveniently placed, giving access to all the local amenities and superb transport links with Guildford being just a short drive away. Call us today to book a viewing.

Outside

The home has a well-kept, south-facing garden perfect for outside entertaining. There is also a parking bay on the right-hand side.

Floorplan

GROUND FLOOR



Whilst every attempt has been made to ensure the accuracy of the floorplan contained here, measurements of doors, windows, rooms and any other items are approximate and no responsibility is taken for any error, omission or mis-statement. This plan is for illustrative purposes only and should be used as such by any prospective purchaser. The services, systems and appliances shown have not been tested and no guarantee as to their operability or efficiency can be given.
Made with Metropack ©2024



TO ARRANGE A VIEWING PLEASE CONTACT:
Tel: **01252 361550** or Email: **info@bridges.co.uk**



Important Notice - These particulars are set out as a general outline only for the guidance of intended purchasers/tenants and do not form part of any offer or contract and must not be relied upon as statements or representations of fact. Purchasers/Tenants must satisfy themselves by inspection or otherwise as to their correctness.