



## Two Bedroom Ground Floor Apartment Portsmouth Road, Camberley, Surrey, GU15 1FB

Offers in excess of: £260,000

- Two Bedrooms
- Ground Floor Maisonette
- En Suite and Family Bathroom
- Cul-de-Sac Location
- Spacious Kitchen/Diner
- Allocated Parking
- Communal Gardens
- EPC: C (76)





## Description

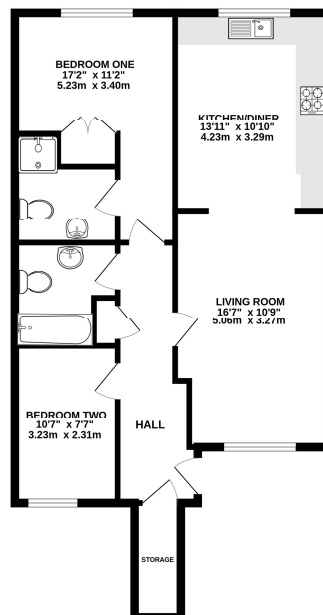
A spacious and well presented two bedroom ground floor maisonette located in a cul-de-sac location within easy access to Camberley town centre and commuter links. The accommodation comprises of an entrance hall, front aspect living room opening on to a spacious kitchen/diner, two double bedrooms with an en suite shower room and fitted wardrobes to the main bedroom and a family bathroom. An internal inspection is highly recommended to truly appreciate all that this property has to offer.

## Outside

Externally the property benefits from communal gardens to the front as well as one allocated parking space. The property is conveniently located within easy access to Camberley town centre, great commuter links via the A30/M3 and excellent local schools.

## Floorplan

GROUND FLOOR



While every attempt has been made to ensure the accuracy of the floorplan contained here, measurements of doors, windows, rooms and any other items are approximate and no responsibility is taken for any error, omission or mis-statement. This plan is for illustrative purposes only and should be used as such by any prospective purchaser. The vendor, agents and advertiser shall bear no liability and no guarantee as to their accuracy or efficiency can be given. Made with Intertec CS24



TO ARRANGE A VIEWING PLEASE CONTACT:

Tel: 01276 685544 or Email:

[camberley@bridges.co.uk](mailto:camberley@bridges.co.uk)



Important Notice - These particulars are set out as a general outline only for the guidance of intended purchasers/tenants and do not form part of any offer or contract and must not be relied upon as statements or representations of fact. Purchasers/Tenants must satisfy themselves by inspection or otherwise as to their correctness.