



## Two Bedroom Maisonette

**Osborne Road, Farnborough, Hampshire, GU14 6AF**

Guide Price: £195,000

- Two Bedrooms
- Split Level Maisonette
- Close to North Camp Location
- Parking to the Rear
- Communal Garden
- Easy Access to the A331 and M3
- Estimated Rental Price : £1,200 pcm
- EPC : C (75)



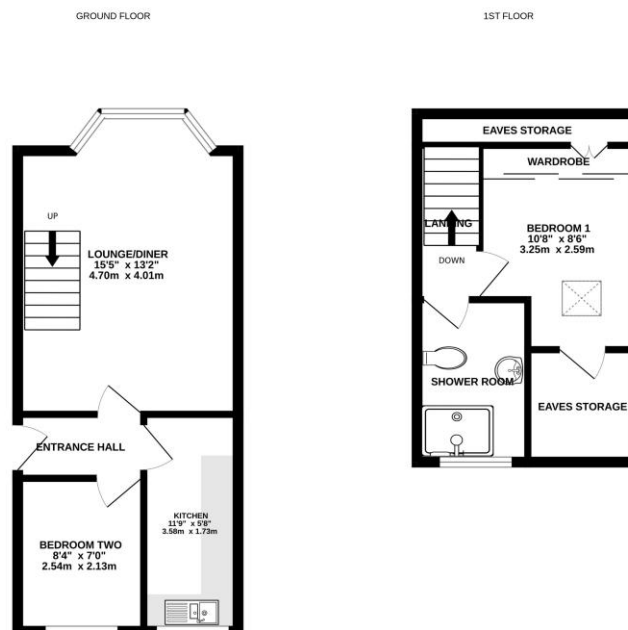
## Description

Situated in the popular North Camp Village area is this well presented two bedroom split level maisonette situated within walking distance of the village centre with its wealth of local amenities such as shops, cafes and beauty salons. This property benefits from accommodation over two floors and comprises of an entrance hall, two bedrooms, modern fitted kitchen, lounge with a bay fronted dining area and stairs to the first floor. The first floor comprises of a recently refitted three piece white bathroom suite and main bedroom.

## Outside

Parking to the rear and a communal garden area.

## Floorplan



Whilst every attempt has been made to ensure the accuracy of the floorplan contained herein, measurements of doors, windows, rooms and any other items are approximate and no responsibility is taken for any error, omission or mis-statement. This plan is for illustrative purposes only and should be used as a guide only for prospective purchasers. The services, fixtures and fittings shown hereon are not intended and no guarantee as to their availability or efficiency can be given.  
Made with MetreGen 02/23



TO ARRANGE A VIEWING PLEASE CONTACT:  
Tel: **01252 361550** or Email: [info@bridges.co.uk](mailto:info@bridges.co.uk)



Important Notice - These particulars are set out as a general outline only for the guidance of intended purchasers/tenants and do not form part of any offer or contract and must not be relied upon as statements or representations of fact. Purchasers/Tenants must satisfy themselves by inspection or otherwise as to their correctness.