



One Bedroom Apartment

4a Netley Street, Farnborough, Hampshire, GU14 6GW

Price: £190,000

- One Double Bedroom
- Ground Floor Apartment
- Modern Bathroom
- Well Regarded Residential Location
- Allocated Parking
- Entry Phone System
- No Onward Chain
- EPC : C (80)



Description

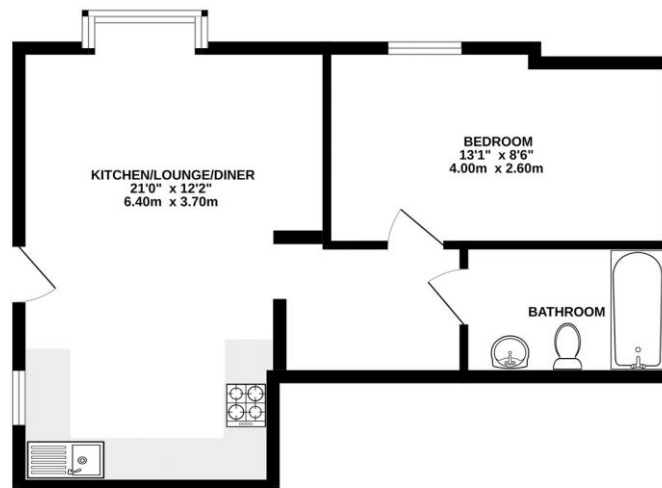
A niche collection of eleven one bedroom apartments, ideal for both investors and owner occupiers. Penny Court is a new development of stylish bespoke one bedroom apartments nestled in a residential location in North Camp overlooking Osbourne Road Park. Each unit benefits from its own unique features from French doors to the communal grounds to views over Osbourne Road Park. Every apartment benefits from a full complement of appliances including a fridge/freezer, a washing machine, an oven, hobs, an extractor, and a dishwasher. The bathroom is finished in a contemporary style with modern tiles and chrome fittings.

Outside

Externally there is communal gardens and allocated parking.

Floorplan

GROUND FLOOR



Whilst every attempt has been made to ensure the accuracy of the floorplan contained here, measurements of doors, windows, stairs and any other items are approximate and no responsibility is taken for any error, omission or mis-statement. This plan is for illustrative purposes only and should be used as such by any prospective purchaser. The services, systems and appliances shown have not been tested and no guarantee as to their operability or efficiency can be given.
Made with Intertop CSD4



TO ARRANGE A VIEWING PLEASE CONTACT:
Tel: **01252 361550** or Email: info@bridges.co.uk



Important Notice - These particulars are set out as a general outline only for the guidance of intended purchasers/tenants and do not form part of any offer or contract and must not be relied upon as statements or representations of fact. Purchasers/Tenants must satisfy themselves by inspection or otherwise as to their correctness.