



One Double Bedroom Maisonette Bentley, Farnham, Hampshire, GU10 5HY

Price: £175,000

- One Double Bedroom
- Ground Floor Maisonette
- Open Plan Living Room
- Allocated Parking
- Delightful Location
- Share of Freehold
- Estimated Rental Price: £1,000 pcm
- EPC: C (69)



Description

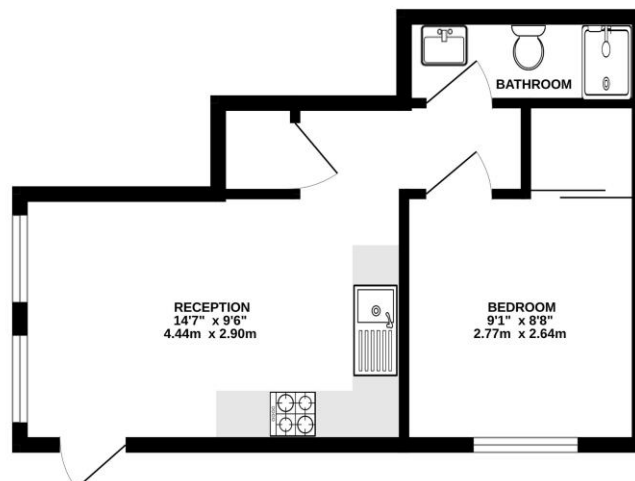
Bridges Estate Agents are pleased to introduce to the market this superb one double bedroom ground floor maisonette which is situated within the picturesque village of Bentley. The property offers a share of freehold, long lease and there are no service charges. The property boasts one double bedroom, a bathroom, and offers the best of contemporary living with an open plan living room/dining room, and finally a kitchen with integrated appliances.

Outside

Externally you benefit from one parking space to the front of the property with plenty of visitor spaces too. To view the Material Information Certificate for this property please click [Here](#) or contact us to request a copy.

Floorplan

GROUND FLOOR



Whilst every attempt has been made to ensure the accuracy of the floorplan contained here, measurements of doors, windows, rooms and any other items are approximate and no responsibility is taken for any omission or mis-statement. This plan is for illustrative purposes only and should be used as such by any prospective purchaser. The services, systems and appliances shown have not been tested and no guarantee as to their operability or efficiency can be given.
Made with Intergen iCAD



TO ARRANGE A VIEWING PLEASE CONTACT:
Tel: **01252 361550** or Email: **info@bridges.co.uk**



Important Notice - These particulars are set out as a general outline only for the guidance of intended purchasers/tenants and do not form part of any offer or contract and must not be relied upon as statements or representations of fact. Purchasers/Tenants must satisfy themselves by inspection or otherwise as to their correctness.