



## One Double Bedroom Apartment

London Road, Camberley, Surrey, GU15 3EY

Offers in excess of: £225,000

- One Double Bedroom
- Lifts to All Floors
- Allocate Parking Space
- Town Centre Location
- Bicycle Storage
- Integrated and Bosch Appliances
- Estimated Rental Price: £1,200 pcm
- EPC: D (67)



## Description

Impressive one bedroom first floor apartment situated in the heart of Camberley. The property comes with one allocated parking space and lifts to all floors. The accommodation comprises of lounge/dining room, kitchen, bathroom and double bedroom.

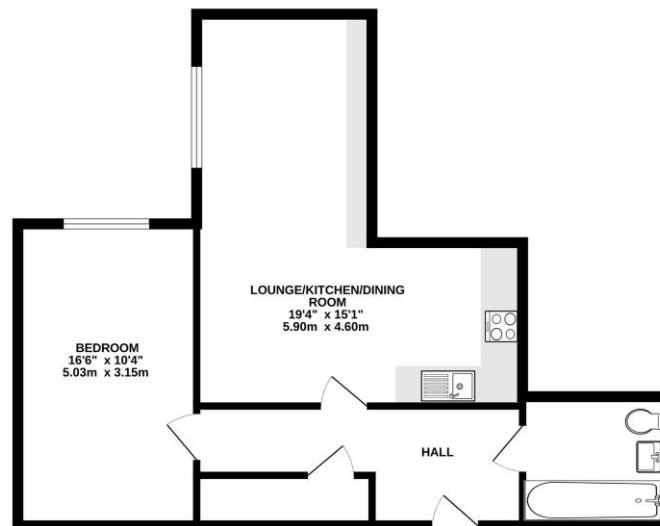
## Outside

Despite its central location, the development provides one allocated parking space within the private gated car park at the rear of the site, along with secure bicycle storage.

To view the Material Information Certificate for this property please click [Here](#) or contact us to request a copy.

## Floorplan

GROUND FLOOR



While every attempt has been made to ensure the accuracy of the floorplan contained here, measurements of doors, windows, cupboards and any other items are approximate and no responsibility is taken for any error, omission or mis-statement. This plan is for illustrative purposes only and should be used as such for any prospective purchaser. The services, systems and appliances shown here are not guaranteed and no guarantee as to their quantity or efficiency can be given.  
Home-visit-Intelligence (HVI)



TO ARRANGE A VIEWING PLEASE CONTACT:

Tel: **01276 685544** or Email:

**camberley@bridges.co.uk**



Important Notice - These particulars are set out as a general outline only for the guidance of intended purchasers/tenants and do not form part of any offer or contract and must not be relied upon as statements or representations of fact. Purchasers/Tenants must satisfy themselves by inspection or otherwise as to their correctness.