



## Two Bedroom Ground Floor Maisonette Beta Road, Farnborough, Hampshire, GU14 8PH

Guide Price: £185,000

- Two Double Bedrooms
- Ground Floor
- Tenants in Situ
- Refitted Kitchen
- Front and Rear Garden
- Close to Schools
- Close to Shops
- EPC: C (72)



## Description

Coming to the market with no onward chain complications is this deceptively spacious two bedroom ground floor maisonette. The footprint consists of two fantastic sized double bedrooms, family bathroom, ample sized living room and modern kitchen that has been refitted since being owned. There is the added bonus of a garage, as well as two parking spaces with this home.

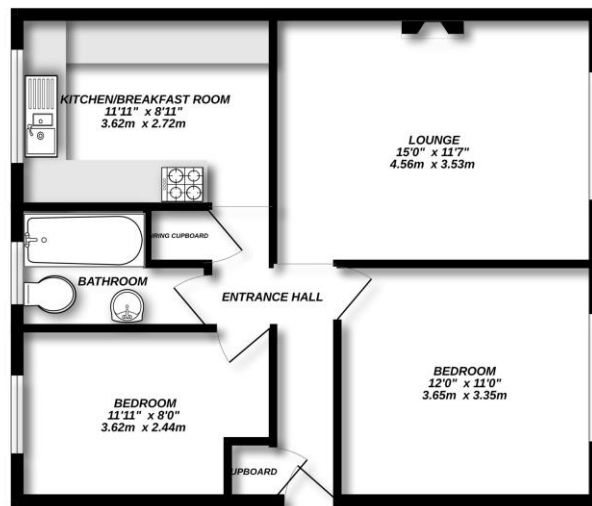
## Outside

With a corner plot consisting of both front and rear garden, this property will be ideal for those who like their outdoor space. The rear garden area is completely private, the ideal space to relax. Found in the heart of the West Heath Development, this home is within walking distance of Giffard Drive surgery, schools, Post Office and other amenities.

To view the Material Information Certificate for this property please click [Here](#) or contact us to request a copy.

## Floorplan

GROUND FLOOR



Made with floorplan 0205



TO ARRANGE A VIEWING PLEASE CONTACT:  
Tel: **01252 361550** or Email: [info@bridges.co.uk](mailto:info@bridges.co.uk)



Important Notice - These particulars are set out as a general outline only for the guidance of intended purchasers/tenants and do not form part of any offer or contract and must not be relied upon as statements or representations of fact. Purchasers/Tenants must satisfy themselves by inspection or otherwise as to their correctness.