



## One Double Bedroom Maisonette

**Aldworth Close, Bracknell, Berkshire, RG12 7AW**

Price: £190,000

- One Double Bedroom
- Ground Floor Maisonette
- Cul-de-Sac Location
- Close to Town Centre and Mainline Station
- Pet Friendly
- Communal Grounds
- Allocated Parking
- EPC: C (72)



## Description

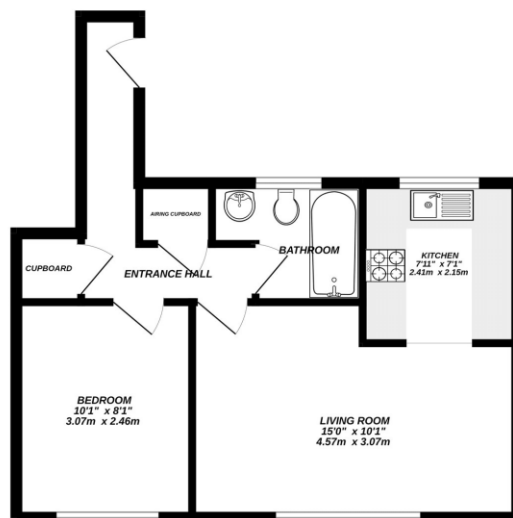
This charming purpose built one bedroom maisonette offers a fantastic opportunity to enjoy modern living just moments from Bracknell town centre and the mainline railway station. With its own private entrance and allocated parking, the property is ideal for professionals, first time buyers, or investors and it's pet friendly, making it perfect for animal lovers. Comprising an entrance hall, living room, kitchen, double bedroom and bathroom. Externally there is an enclosed communal garden laid to lawn.

## Outside

Outside features communal grounds to lawn and there is allocated parking to the front of the property. To view the Material Information Certificate for this property please click [Here](#) or contact us to request a copy.

## Floorplan

GROUND FLOOR



Whilst every attempt has been made to ensure the accuracy of the figures contained here, measurements of doors, windows, rooms and any other items are approximate and no responsibility is taken for any error, omission or mis-statement. This plan is for guidance purposes only and should be used in conjunction with the prospective purchaser. The services, systems and appliances shown here are for illustrative purposes only and no guarantee is given as to their operability or efficiency can be given.  
Made with Measure 5/1/20



TO ARRANGE A VIEWING PLEASE CONTACT:  
Tel: **01344 962150** or Email: **info@bridges.co.uk**



Important Notice - These particulars are set out as a general outline only for the guidance of intended purchasers/tenants and do not form part of any offer or contract and must not be relied upon as statements or representations of fact. Purchasers/Tenants must satisfy themselves by inspection or otherwise as to their correctness.