



Two Bedroom Apartment

Burke Place, Wellesley, Aldershot, Hampshire, GU11 4BR

Price: £100,000

- Two Double Bedrooms
- Top Floor Apartment
- Gas Central Heating
- 40% Shared Ownership
- Fully Integrated High Gloss Kitchen
- Two Allocated Parking Spaces
- Immaculately Presented
- EPC: B (84)



Description

40% SHARED OWNERSHIP

Wellesley is an exciting development in Rushmoor, located in a beautiful part of Northeast Hampshire, within easy access to the countryside and London. Built to an exceptional quality, this stunning apartment is light and airy. The accommodation boasts an open plan kitchen/lounge, a principal bedroom with built-in wardrobes, a further double bedroom and a family bathroom. The property further benefits from being a top floor apartment and has allocated parking for two cars.

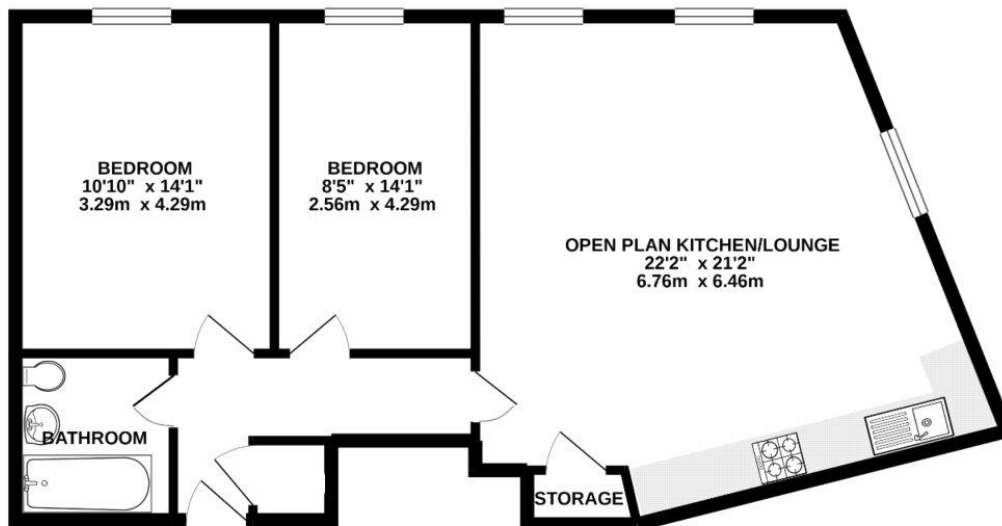
Bridges are delighted to offer this immaculately presented property to the market and highly recommend viewing as ideally situated for the A331 with good commuter links to London.

Outside

The property benefits from two allocated parking spaces.

To view the Material Information Certificate for this property please click [Here](#) or contact us to request a copy.

Floorplan



Whilst every attempt has been made to ensure the accuracy of the floorplan contained here, measurements of doors, windows, rooms and any other items are approximate and no responsibility is taken for any error, omission or mis-statement. This plan is for illustrative purposes only and should be used as such by any prospective purchaser. The services, systems and appliances shown have not been tested and no guarantee as to their operability or efficiency can be given.
Made with Metrexx ©2021



TO ARRANGE A VIEWING PLEASE CONTACT:
Tel: **01252 361550** or Email: **info@bridges.co.uk**



Important Notice - These particulars are set out as a general outline only for the guidance of intended purchasers/tenants and do not form part of any offer or contract and must not be relied upon as statements or representations of fact. Purchasers/Tenants must satisfy themselves by inspection or otherwise as to their correctness.