



Two Bedroom End of Terrace House

Mytchett Heath, Mytchett, Camberley, Surrey, GU16 6DP

Guide Price: £365,000

- Two Double Bedrooms
- Refitted Bathrooms and Kitchen
- Downstairs Wet Room
- Three Reception Rooms
- Exclusive Development for the Over 55's
- Guest Suite And Laundry Facilities
- Resident Estate Manager
- EPC: D (56)



Description

Situated in an exclusive over-55s development and recently refurbished, this stunning two bedroom home offers comfortable living for years to come. The ground floor features a spacious entrance hall, living room with electric fire and marble surround, dining room, conservatory, refitted kitchen, and wet room.

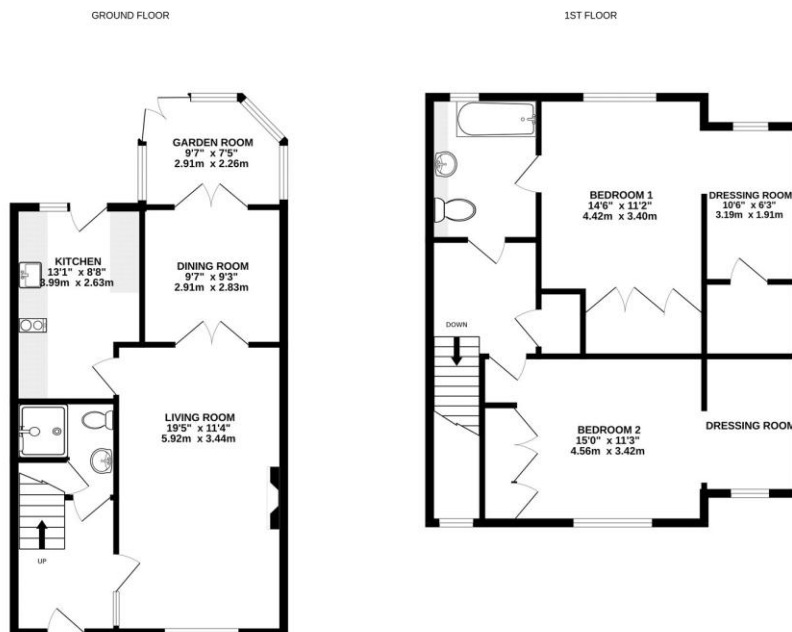
Upstairs, both bedrooms include built-in wardrobes, with the principal bedroom benefitting from a dressing area, walk-in wardrobe, and access to a Jack and Jill bathroom.

Mytchett Heath enjoys a peaceful Surrey setting, bordered by woodland, the Basingstoke Canal, and 59 acres of Frimley Lodge Park.

Outside

Outside, the property features a well tended patio garden, garage, and parking. The communal grounds are exceptional, formerly part of a school where the head gardener cultivated a passion for rare and exotic trees. Now in their prime, these specimens alongside manicured lawns, heathers, and rhododendrons create a picturesque setting around two charming courtyards.

Floorplan



Whilst every attempt has been made to ensure the accuracy of the description contained here, measurements of floors, windows, rooms and any other items are approximate and no responsibility is taken for any error, omission or mis-statement. This plan is for illustrative purposes only and should be used as such by any prospective purchaser. The services, systems and appliances shown have not been tested and no guarantee as to their operability or efficiency can be given.
Made with Hozomep ©2023



TO ARRANGE A VIEWING PLEASE CONTACT:
Tel: **01252 361550** or Email: **info@bridges.co.uk**



Important Notice - These particulars are set out as a general outline only for the guidance of intended purchasers/tenants and do not form part of any offer or contract and must not be relied upon as statements or representations of fact. Purchasers/Tenants must satisfy themselves by inspection or otherwise as to their correctness.