



Two Bedroom Mobile Home

Pine Park, Aldershot Road, Guildford, Surrey, GU3 3HU

Price: £180,000

- Two Bedrooms
- Walk-In Wardrobe
- Close to Guildford
- Externally Re-Clad and Insulated
- Sun Room
- Parking
- Double Glazed
- EPC: TBC



Description

This lovely two bedroom park home is offered to the market in very good condition throughout and with no onward chain. It benefits from recent renovation including wall insulation and refitted boiler. This home also benefits from a beautiful extended sun room with doors overlooking the garden. The property is situated in a very desirable location in Normandy, close to Guildford and Ash, with plenty of lovely walks from the front door. This great home has its own private wrap around garden providing a patio, space for storage sheds and low maintenance garden.

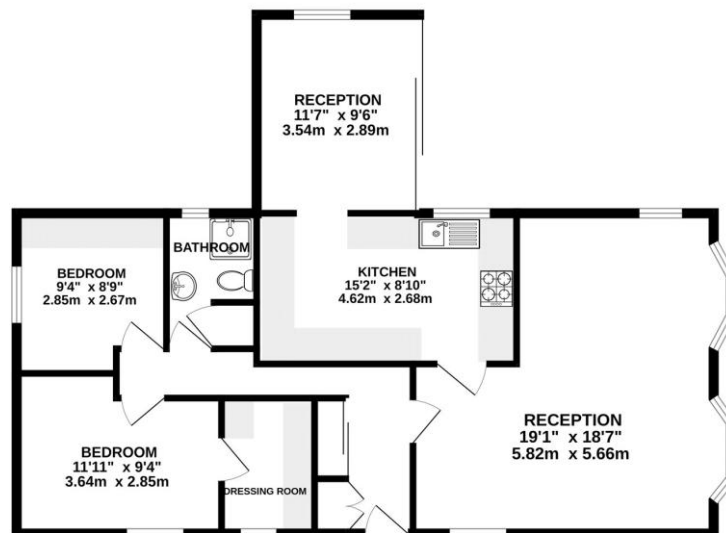
Residents and visitor parking is available; the park is for over 55's for cash buyers only. Please call us today to book your viewing.

Outside

There is a lovely wrap around garden with parking to the front for multiple vehicles.

Floorplan

GROUND FLOOR



Whilst every attempt has been made to ensure the accuracy of the floorplan contained here, measurements of doors, windows, rooms and any other items are approximate and no responsibility is taken for any omission or mis-statement. This plan is for illustrative purposes only and should be used as such by any prospective purchaser. The services, systems and appliances shown here are not tested and no guarantee as to their operability or efficiency can be given.
Made with Hozpro's i2024.



TO ARRANGE A VIEWING PLEASE CONTACT:
Tel: **01252 361550** or Email: **info@bridges.co.uk**



Important Notice - These particulars are set out as a general outline only for the guidance of intended purchasers/tenants and do not form part of any offer or contract and must not be relied upon as statements or representations of fact. Purchasers/Tenants must satisfy themselves by inspection or otherwise as to their correctness.