



Two Bedroom Apartment Shawfield Road, Ash, Surrey, GU12 6PG

Price: £190,000

- Two Bedroom Apartment
- Fully Modernised Throughout
- Second Floor
- NO CHAIN
- Modern Fitted Kitchen
- Stylish Bathroom
- Private Balcony
- EPC: C (69)



Description

This well presented two bedroom second floor flat has been tastefully refurbished throughout and is ideal for first time buyers, small families, or investors. Situated in a purpose built local authority block, the property features a stylish modern kitchen with sleek white high gloss wall and base units, warm wood effect worktops, and ample storage.

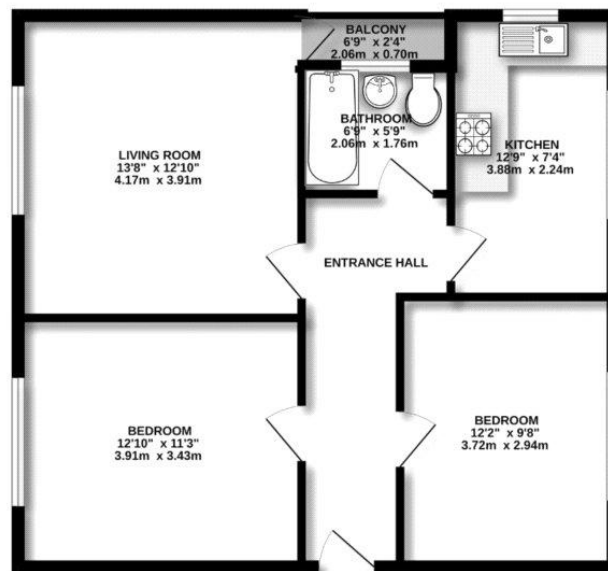
The fully tiled bathroom includes a contemporary white suite, overhead shower, and a practical vanity unit for added storage. Both bedrooms are generously proportioned, providing comfortable living and sleeping space.

Additional highlights include neutral décor throughout, excellent natural light, and a private balcony perfect for morning coffee or evening relaxation.

Outside

Externally, the apartment benefits from a private balcony ideal for enjoying fresh air and elevated views. Set within a well maintained block, residents also enjoy communal grounds and convenient access to nearby amenities and transport links. To view the Material Information Certificate for this property please click [Here](#) or contact us to request a copy.

Floorplan



Measurements are approximate. Not to scale. Illustrative purposes only. Made with Mapbox (2023)



TO ARRANGE A VIEWING PLEASE CONTACT:
Tel: **01252 361550** or Email: info@bridges.co.uk



Important Notice - These particulars are set out as a general outline only for the guidance of intended purchasers/tenants and do not form part of any offer or contract and must not be relied upon as statements or representations of fact. Purchasers/Tenants must satisfy themselves by inspection or otherwise as to their correctness.