



## One Bedroom Apartment

**Corfe Way, Farnborough, Hampshire, GU14 6TS**

Asking Price: £185,000 *Leasehold*

- One Bedroom
- Top Floor Apartment
- Close to Local Amenities
- Allocated Parking
- Must be Seen
- Ideal Investment or First Time Buy
- Estimated Rental Price: £900 pcm
- EPC: D (66)



## Description

Bridges are delighted to offer this one bedroom top floor apartment to the market. This apartment is ideally located close to local amenities and excellent road links.

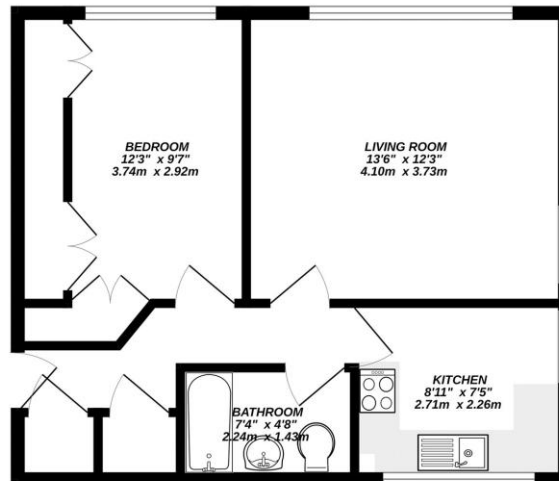
Internally, the accommodation comprises of a dual aspect spacious living room, separate kitchen, bedroom with ample built-in wardrobe space and a three piece bathroom suite.

## Outside

Externally, the property benefits from one allocated parking space.

## Floorplan

TOP FLOOR



Whilst every attempt has been made to ensure the accuracy of the floorplan contained here, measurements of doors, windows, rooms and any other items are approximate and no responsibility is taken for any error, omission or mis-statement. This plan is for illustrative purposes only and should be used as a guide for prospective purchasers. The services, fixtures and appliances shown here may not be included and no guarantee as to their operability or efficiency can be given. Made with Hozonpage 02024



TO ARRANGE A VIEWING PLEASE CONTACT:  
Tel: **01252 361550** or Email: **info@bridges.co.uk**



Important Notice - These particulars are set out as a general outline only for the guidance of intended purchasers/tenants and do not form part of any offer or contract and must not be relied upon as statements or representations of fact. Purchasers/Tenants must satisfy themselves by inspection or otherwise as to their correctness.