

Call: +44 (0)1252 361555



15 Elizabeth House, Fleet, GU51 3SQ

BRIDGES - Available Now. *MOBILE WALKTHROUGH AVAILABLE ON REQUEST*. A rare opportunity to acquire executive 1 bed apartment ranging from £835pcm - £875pcm located within close proximity to both Fleet Town Centre with its variety of amenities, bars and restaurants and Fleet mainline station with a direct line to London Waterloo as well as easy access onto the M3, these fantastic homes offered unrivalled access to both London and the surrounds. Westminster House and Elizabeth House are stylish developments of one- and two-bedroom apartments and one-bedroom luxury maisonettes situated in the heart of the highly regarded Hampshire town. Accessed via communal entrances by a video entry phone system the properties offer contemporary and modern living accommodation which will make them a joy to live in. Outside: There is allocated parking located to the rear of the building with additional visitor parking along with Bike store. Other benefits include integrated kitchen appliances and modern electric heating. No Pets. Unfurnished. *Show apartment photos shown. Layout of advertised apartment may vary.*

Price: £835 PCM

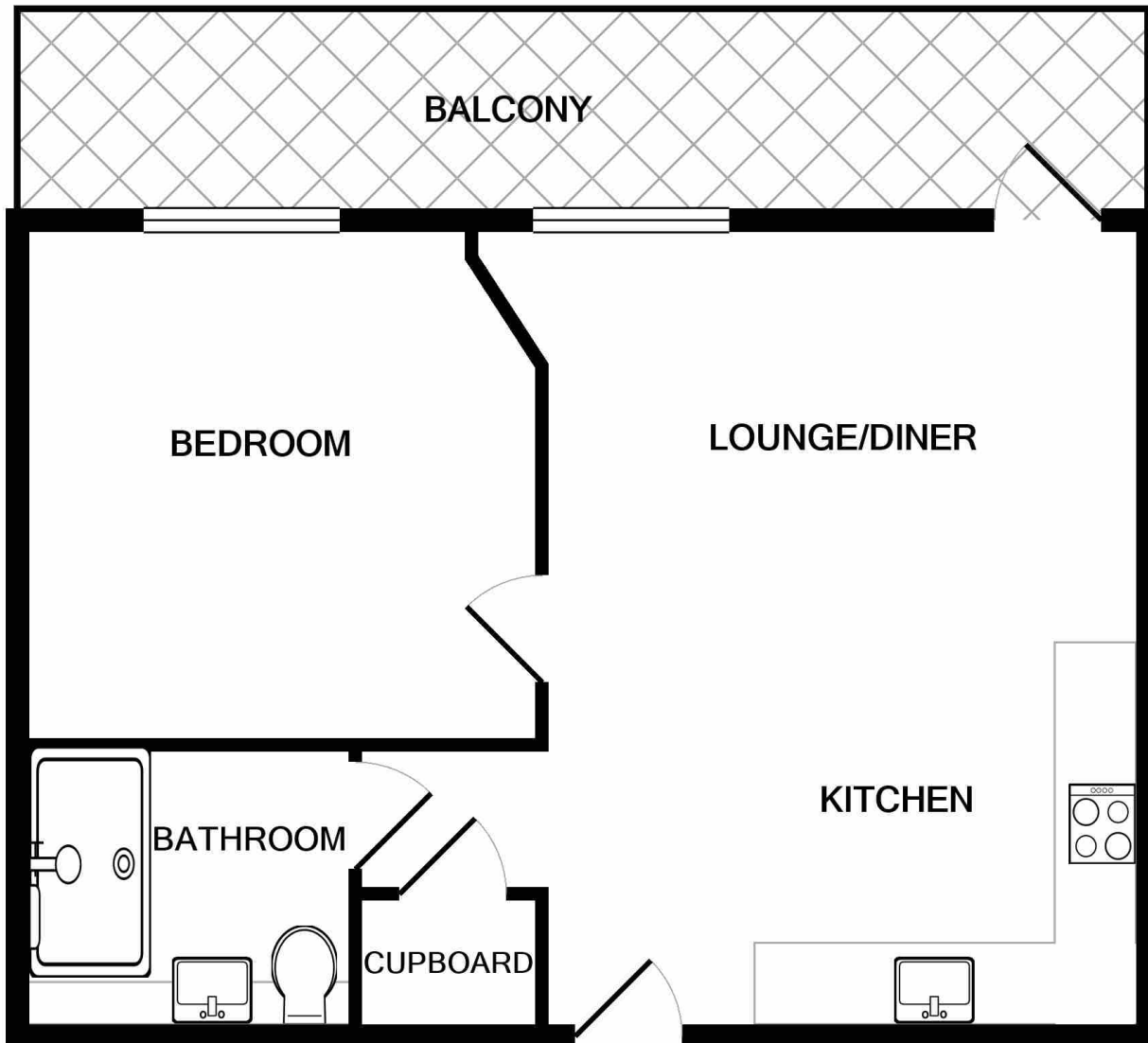
Overview

- Available Now
- One Bedroom Apartment
- BRAND NEW
- EPC Rating: TBC
- Situated in the Heart of Fleet
- Excellent Transport Links
- Integrated Appliances
- Allocated Parking
- Bike Stores
- Unfurnished

Call: +44 (0)1252 361555



Call: +44 (0)1252 361555



Whilst every attempt has been made to ensure the accuracy of the floor plan contained here, measurements of doors, windows, rooms and any other items are approximate and no responsibility is taken for any error, omission, or mis-statement. This plan is for illustrative purposes only and should be used as such by any prospective purchaser. The services, systems and appliances shown have not been tested and no guarantee as to their operability or efficiency can be given.
Made with Metropix ©2020